

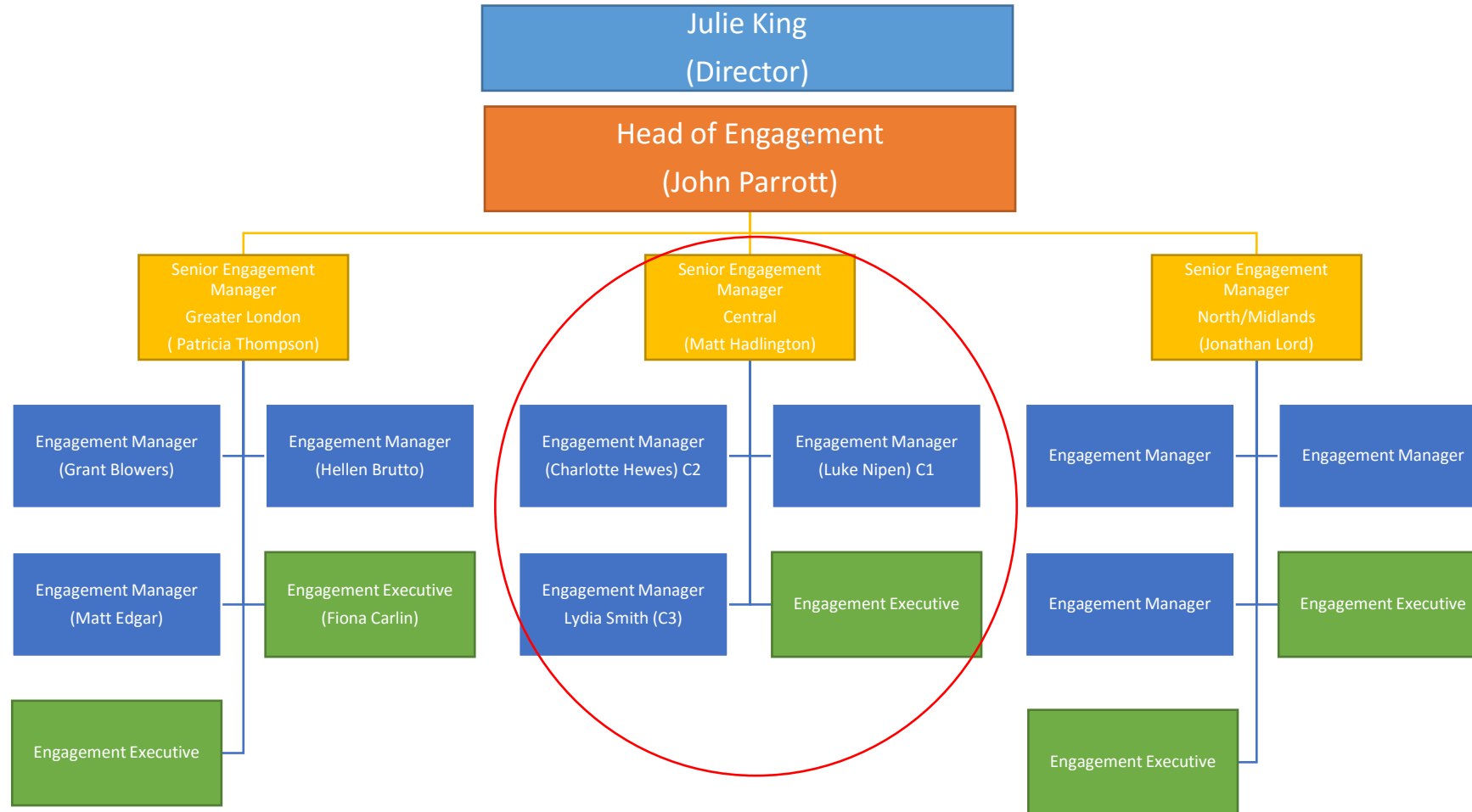
Chesham Society:

15 Feb 2017

Introductions

- **Luke Nipen**
Engagement Manager C1

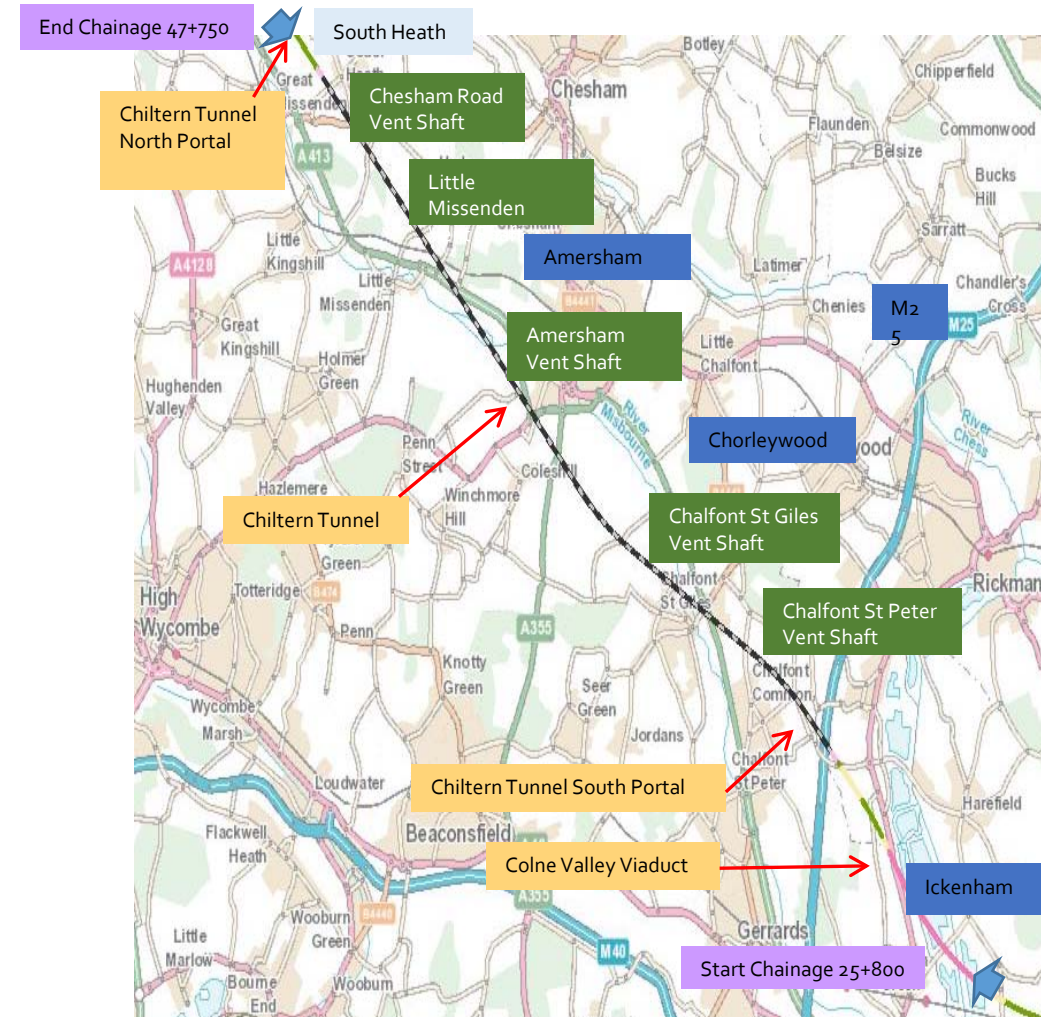
Community Relations Structure



The C1 Sector

The C1 key metrics are:

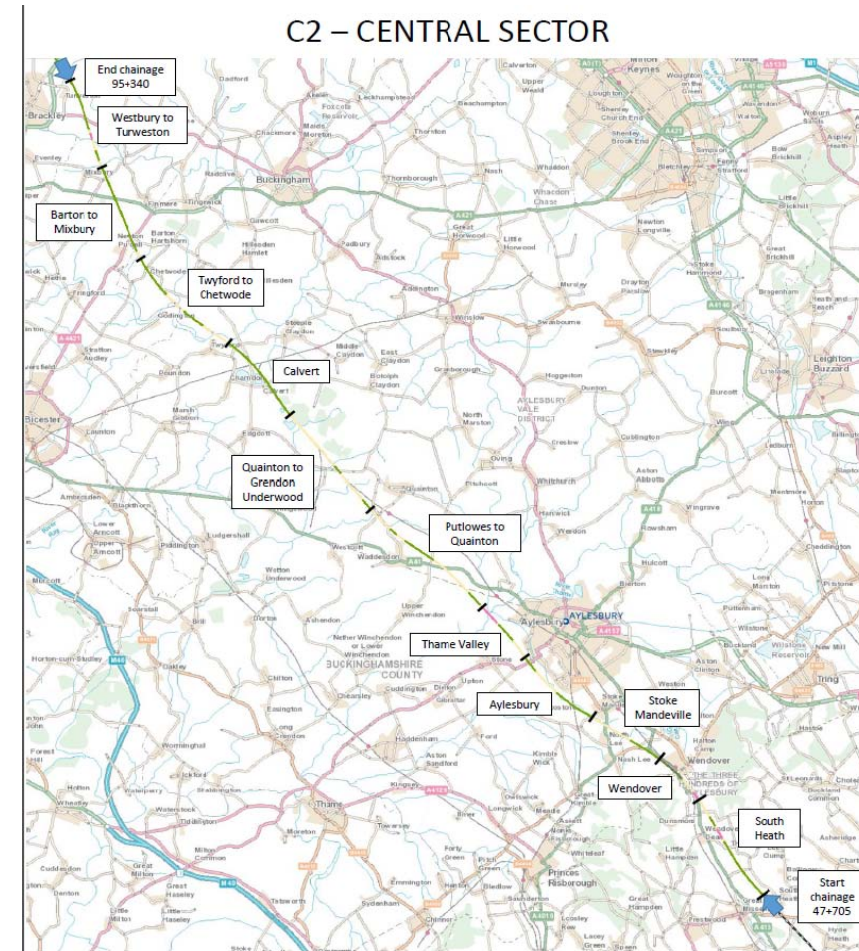
- 21.85km Long
- 15.8km twin bored Chiltern Tunnel
- 2 x 200m long Tunnel Portal Hoods
- Portal Buildings
- 5 Vent Shafts
- 3.4km Colne Valley Viaduct designated a Beacon Structure
- 4 Auto Transformer sites
- 1 Over Bridge
- 0.823km of cuttings
- 1.17km embankments
- 9 Road/PROW diversions
- Temporary Access Slip Roads to M25
- Accesses from A413 to Vent Shafts & North Portal
 - 1 main compound East of M25
 - 12 Satellite compounds



The C2 Sector

The C2 key metrics are:

- 47.59km Long
- 17 Towns and Villages directly affected by HS2
- 32.9km noise Barriers
- 28 Road/PROW diversions
- 54 Junctions to be improved
- 7 Viaducts
- 55 Bridge Structures
- 26.5km of cuttings (12m m3)
- 17.7km embankments
- Calvert IMD
- Wendover Green Tunnel
- Stoke Mandeville Bypass
- 24 Satellite Compounds
- 3 main compounds
 - South of Wendover
 - North of Aylesbury
 - Calvert IMD



Community Engagement update

- Meeting with Parish Councils and communicating with them over activities happening in their area and other programme news.
- General 'project update' sent to all residents in Parishes along the Phase One route.
- Engagement and notifications for ground investigations.
- HS2 Meeting with impacted Councillors and Officers.
- One to one meetings with Councillors (BCC and Districts)
- Meeting and engaging with individual residents with personal concerns and queries.

Pre construction – example activities







NOTICE OF TEMPORARY ROAD CLOSURE

As part of developing the route design of the HS2 high speed railway, we are carrying out ground investigation surveys on **Gower Place**.

Our contractor will be surveying underground utilities and as a result will need to temporarily close Gower Place for the safety of workers during the following night times:

Sunday 14 February 2016 to Friday 19 February 2016
Between 22:00 and 05:00

These types of surveys are known as ground investigations, as they help us to understand the ground conditions and existing utilities along where the railway route is proposed or near to where stations are located. If you'd like to know more about what this kind of survey entails, please visit www.gov.uk/hs2 and download our ground investigation non-technical guide.

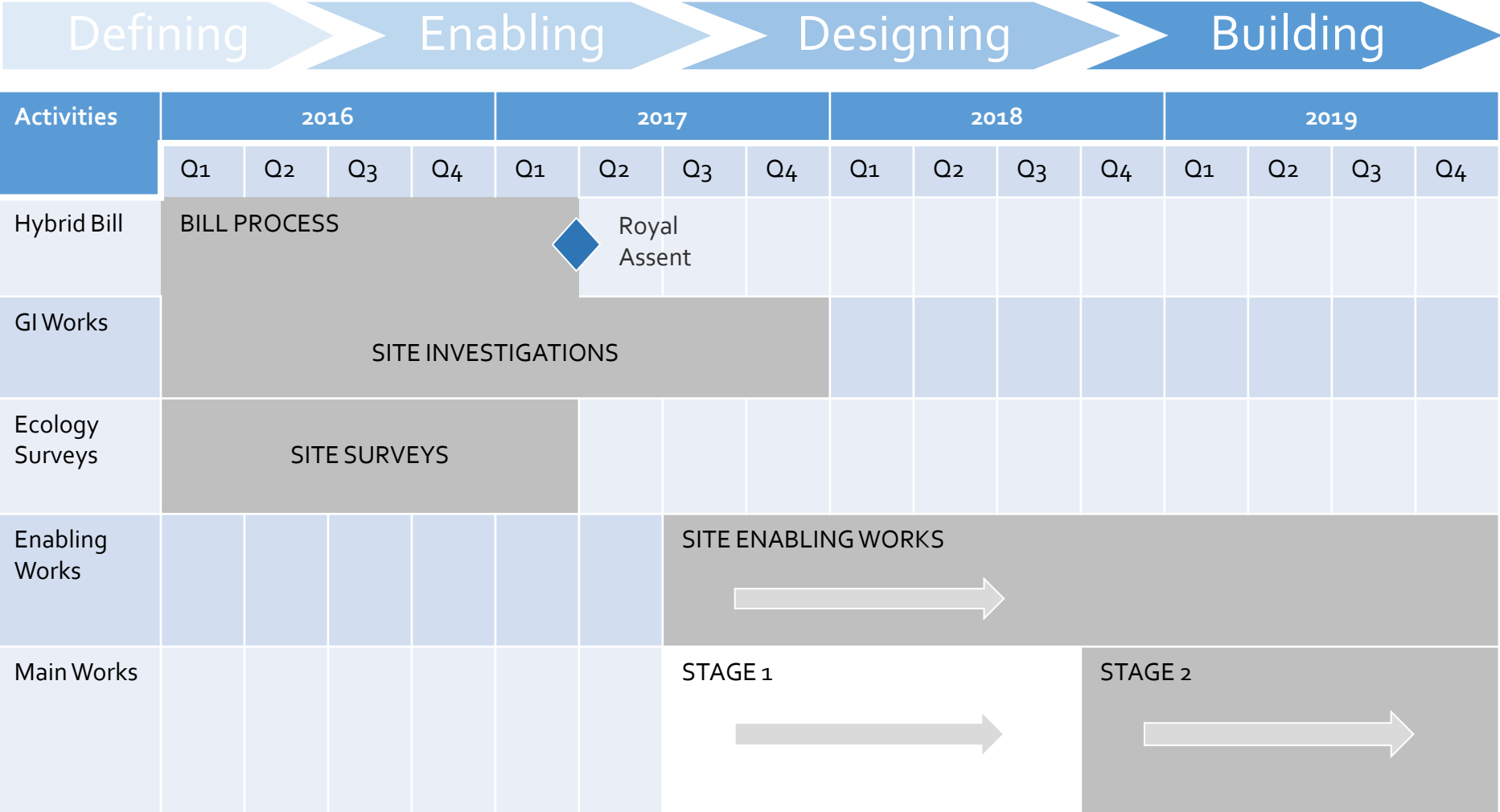
How will this affect me?

Residential and pedestrian access will be maintained along Gower Place but the road will be closed to through traffic. Our contractor will work as quickly as they can, avoid unnecessary noise and keep the area tidy. Once the work is complete, our contractor will restore the area as **soon** as possible. We apologise for any disturbance caused but would like to assure you that these are relatively minor operations and should not be particularly disruptive.

If you have any questions about HS2 or our ground investigation surveys, please contact our helpdesk on 020 7944 4908 or email HS2enquiries@hs2.org.uk

www.gov.uk/hs2

Indicative programme



Community engagement documents



HS2 Community Engagement During Construction

- All HS2 engagement activities will be in line with the *HS2 Community Engagement Framework*.
- Engagement around specific construction activities will be delivered by our Enabling and Main Works contractors.
- HS2 will work with its contractors to ensure that proposed engagement activities will appropriately prepare the community prior to activities taking place.
- The HS2 engagement team will sign-off and assure the contractors proposed community activity. We will also act as an escalation point.

Enabling Works – beginning 2017

Contractor appointed – 'Fusion' (Morgan Sindall, BAM Nuttall & Ferrovial Agroman)

- Contract covers the Central area
- Purpose is to undertake works that need to be commenced early due to programme constraints, are seasonal or 'clear the way' to allow Main Works contracts to 'hit the ground running'

What type of work does this include?

- Surveys (ecology, arboriculture, topographic, structural, demolition)
- Watercourse works including modelling
- Archaeology
- Advance planting & landscaping
- Habitat creation and species translocation
- Site clearance and compound creation
- Utility diversions
- Highway capacity and safety reviews, upgrades & diversions where needed

Local Traffic Management Plans

LTMP Content will include:-

- Site boundaries and the main access/egress points for worksites and compounds;
- Temporary and permanent closures and diversions of highways;
- Routes, accesses and holding areas for construction traffic;
- A local register of construction traffic management undertakings and assurances,
- An initial programme of temporary traffic management, which will be continuously updated and shared with highway authorities and key stakeholders at Traffic Liaison Group meetings.



Local Environmental Management Plans (LEMPs)

- LEMPs pull together the detailed information in the Environmental Statement, and relate it to local areas (roughly aligned to local authority boundaries)
- They identify sensitive receptors in local area, and summarise mitigation and control measures
- We have already met with local authorities across the phase one route to share drafts of these documents and take on board their comments
- We will be the sharing information within them as part of our regular engagement in the coming months, to sense check with local communities
- It is likely these events will be carried out with our enabling works contractors, so they can also share their plans for environmental management systems for work they are carrying out
- Plans for this engagement still being finalised

What to expect next...

- **Royal Assent** – Anticipated late February (going through final legislative process)
 - Hybrid Bill passed Third reading in the House of Lords (386 to 26)
 - Commons Consideration Lords Amendments – Pencilled in for 20th February
- This includes the permission to:
 - Acquire land required for the project on a permanent or temporary basis,
 - Access land to complete surveys,
 - Clear the land needed for the route including removing structures, trees or shrubbery,
 - Carry out work on listed buildings,
 - Divert highways and waterways (permanently or temporarily),
 - Modify infrastructure such as public utilities,
 - Build the HS2 railway and its associated works
 - Carry out protective works to buildings and infrastructure.
 - However, this doesn't mean that HS2 has the license to operate the railway. That still needs to be earned throughout the period that we build the railway.
- Royal Assent **doesn't** mean that HS2 has the powers to deliver all of the works required for the new railway without seeking additional consents from the relevant Local Authority, or appropriate body.
- The Hybrid Bill essentially provides outline planning permission, and sets out the limits of the land that HS2 is able to acquire. We would still some additional consents from local planning authorities.

What to expect next...

- **Construction** - Enabling works will be delivered by our Enabling works contractor, and it consists of the type of work required to prepare the way for the Main Works Contractors to come along and start building the railway. In this area, this could consist of:
 - Archaeology
 - Roadworks
 - Utility Works
 - Habitat relocation
 - The creation of site compounds
- **Engagement** - We are working with our contractors to finalise the type of work we will be carry out in this area, and we will share details with you as soon as they become available.
- **Events** – Engagement events to be held throughout the C1 area providing residents with an opportunity to speak with the relevant staff members and for HS2 to update people on the programme.

Questions?

Contact: Luke.Nipen@hs2.org.uk